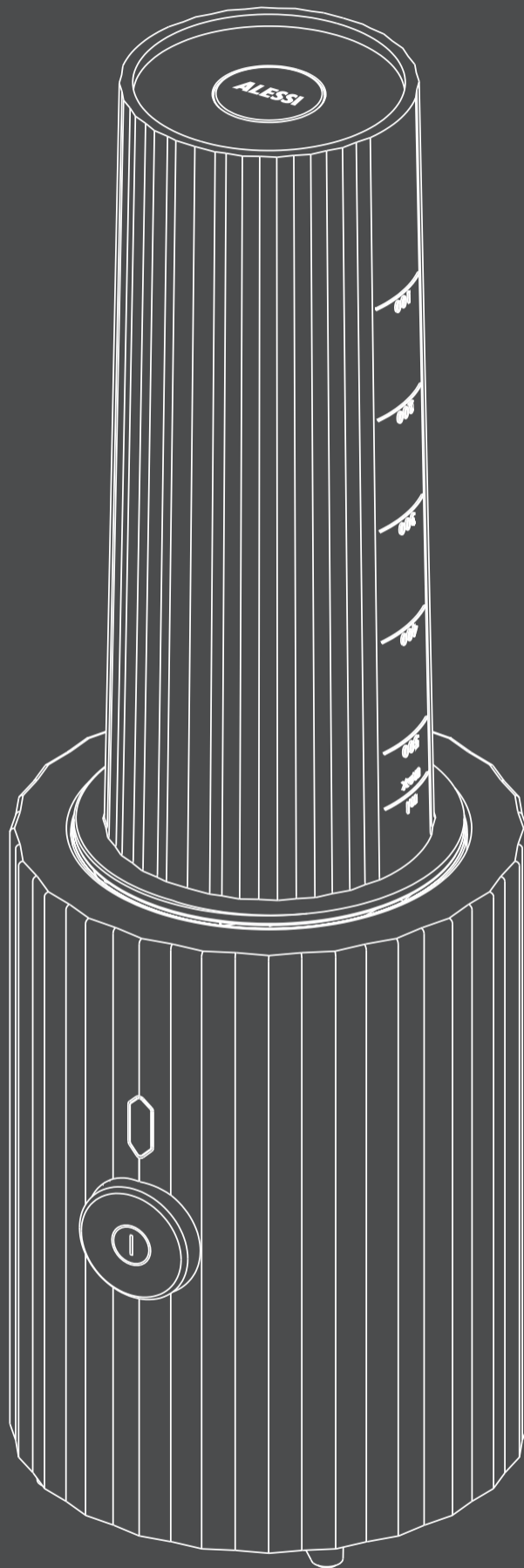


ALESSI



MDL17 - "Plissé"

Frullatore personale con contenitore portatile

Personal blender with portable container

design Michele De Lucchi

2023

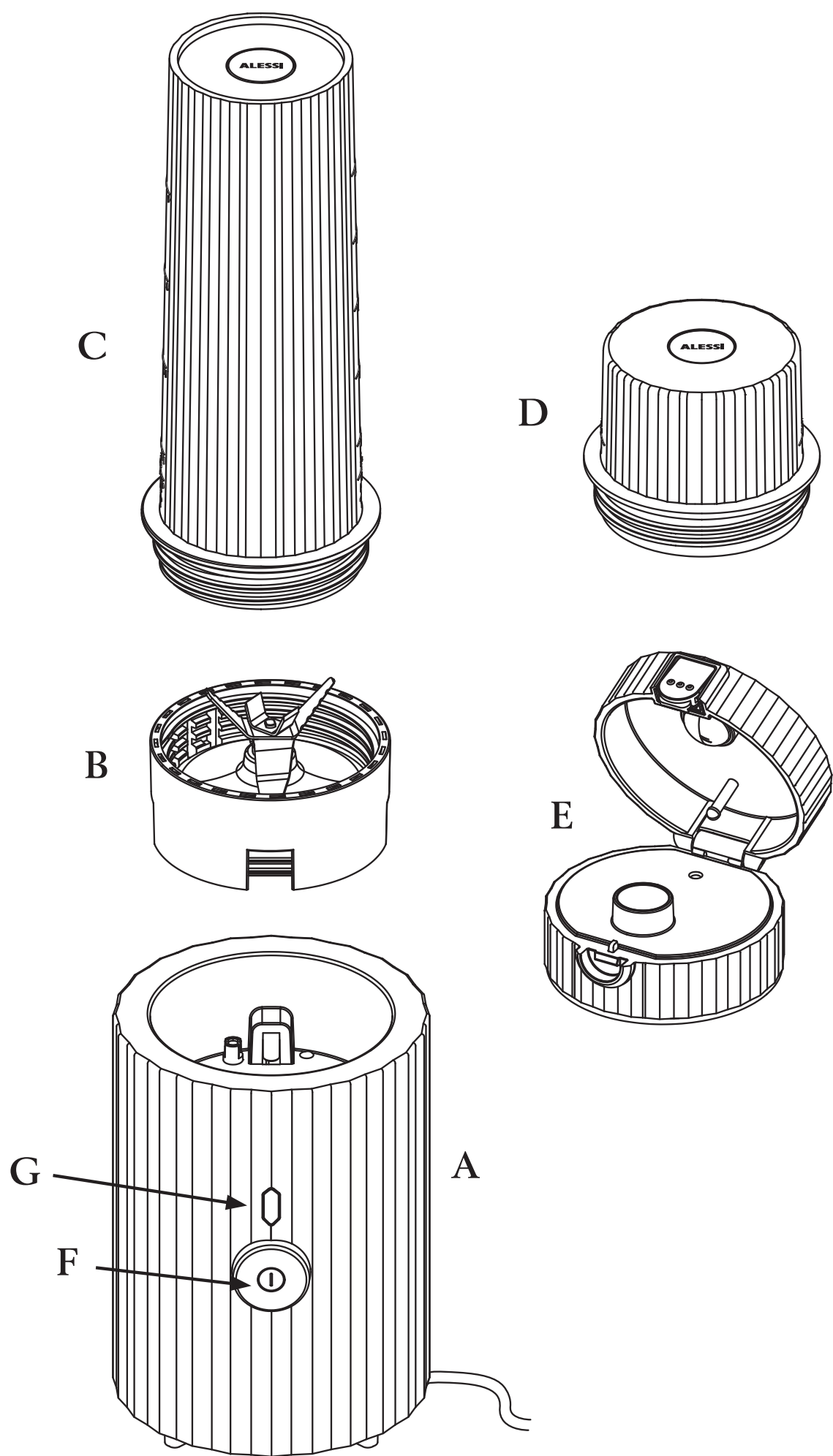


fig. 1

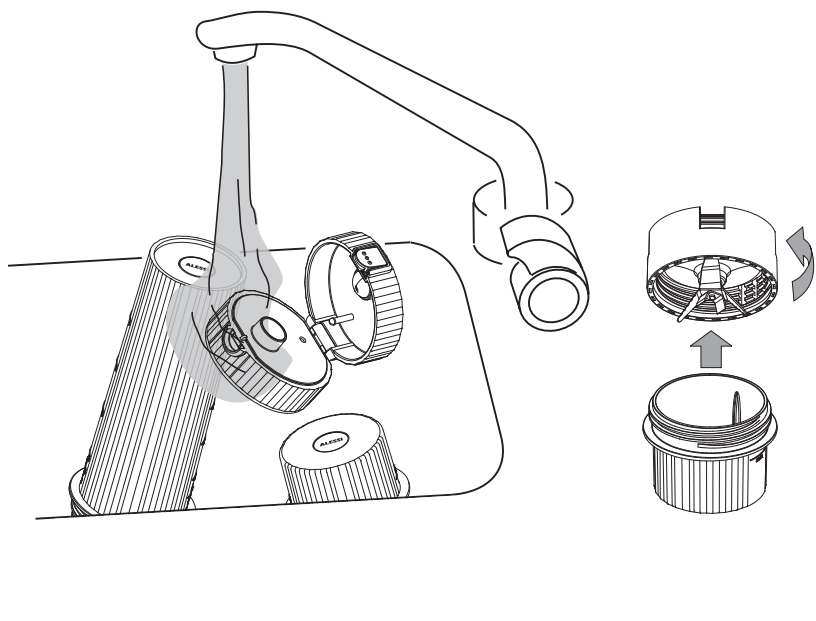


fig. 2

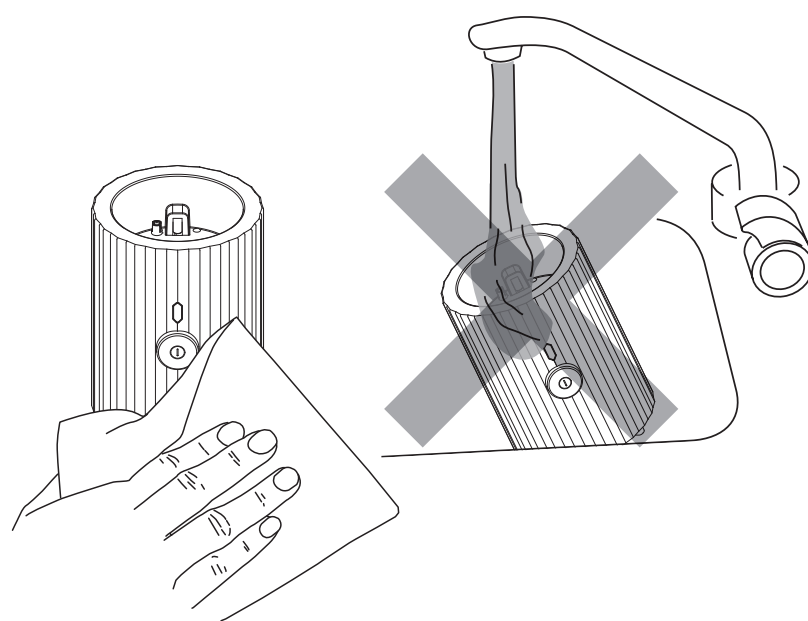


fig. 3

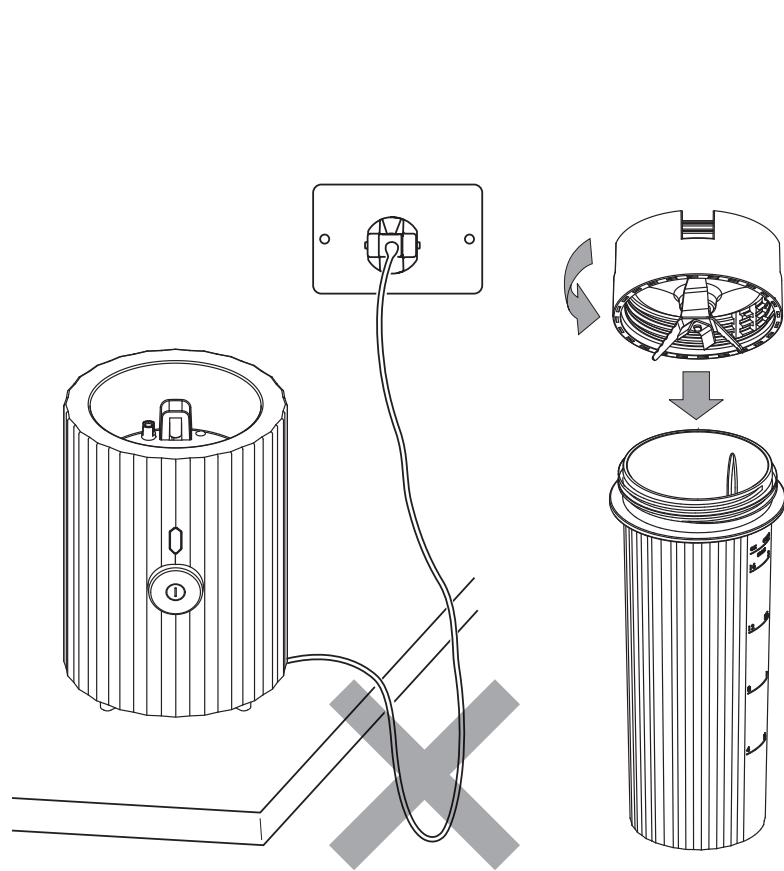


fig. 4

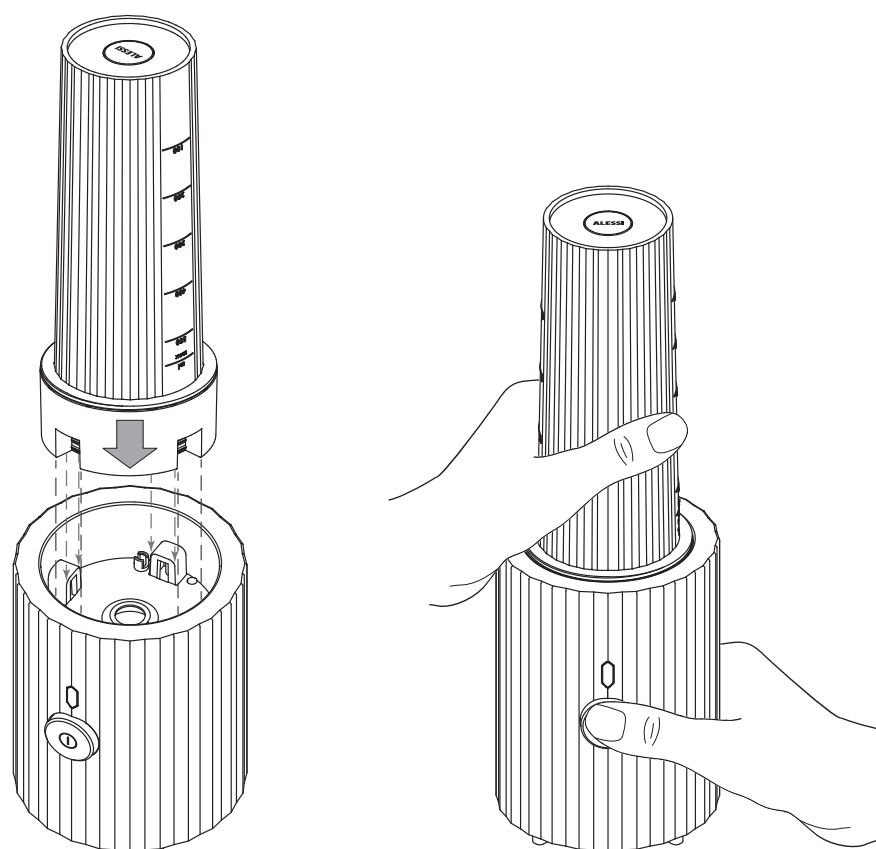


fig. 5

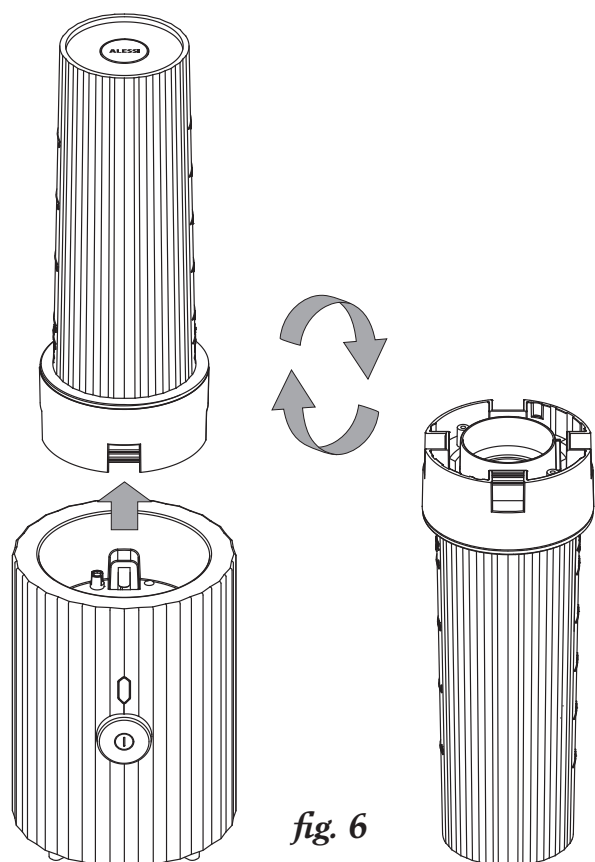


fig. 6

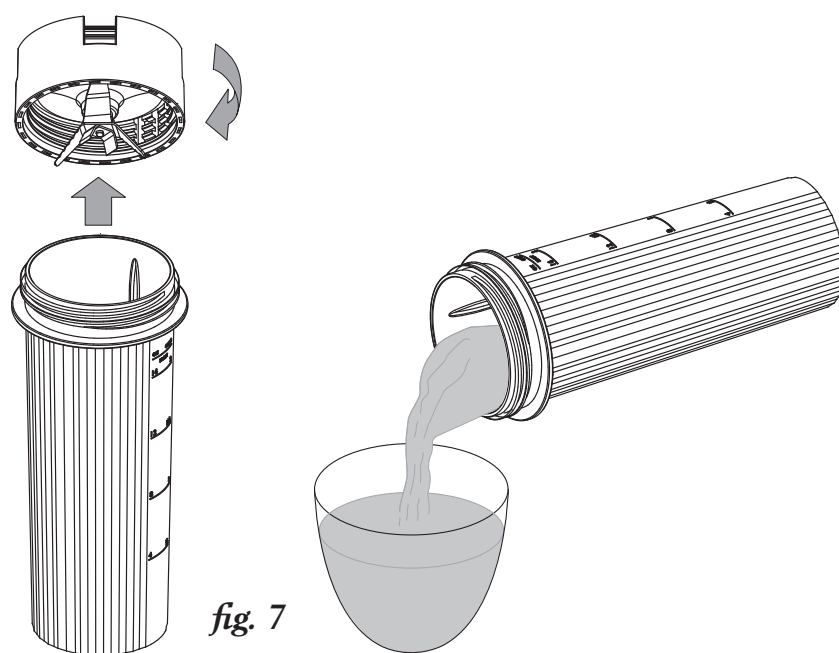


fig. 7

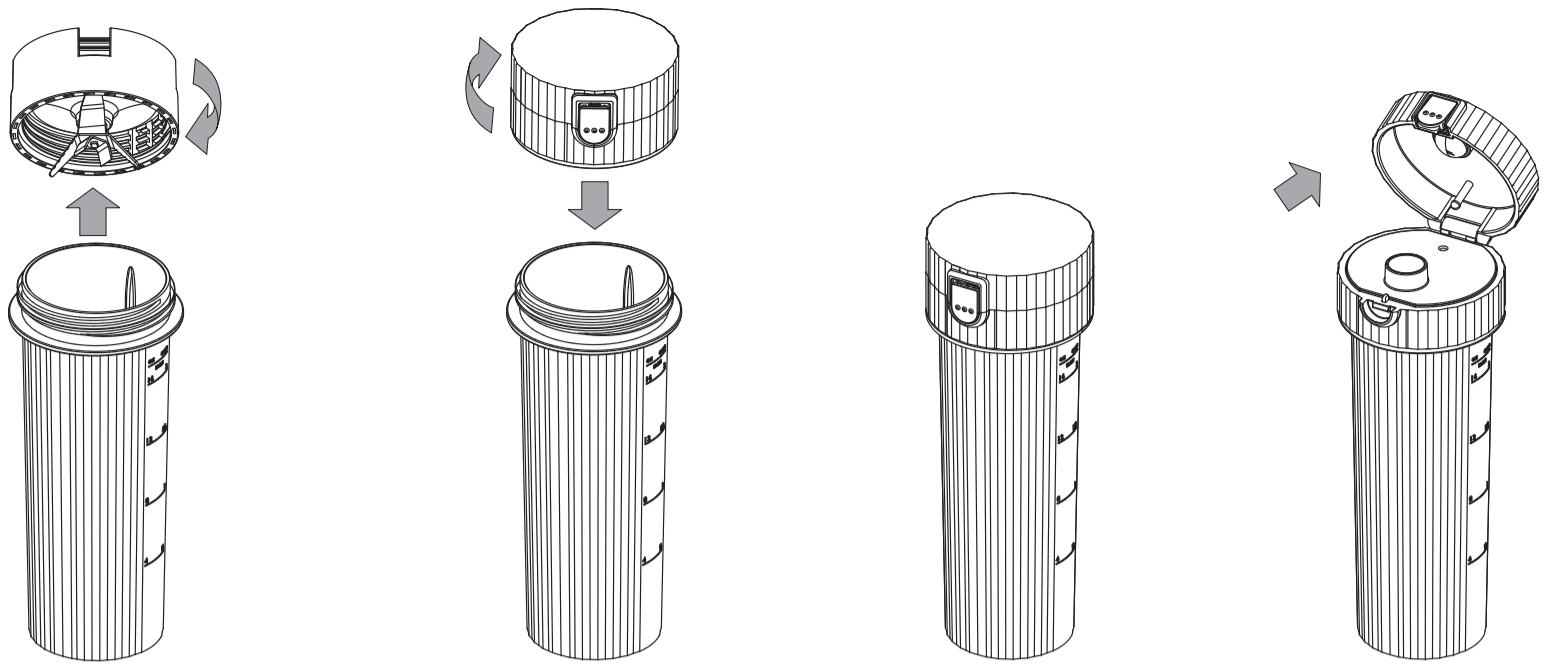


fig. 8

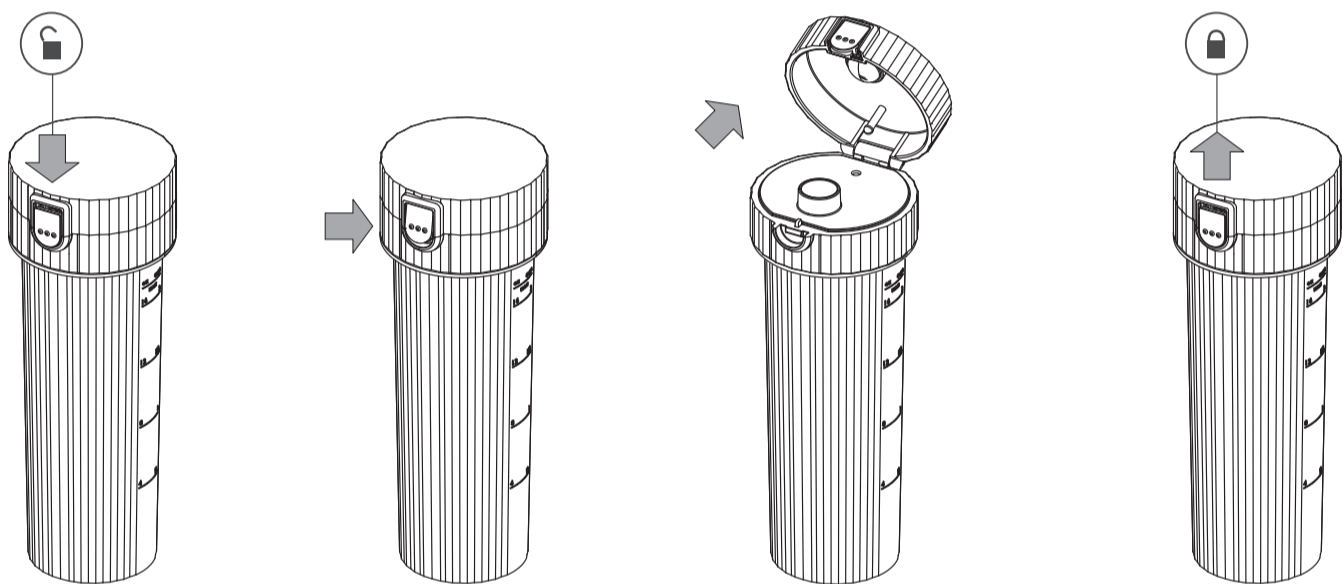


fig. 9

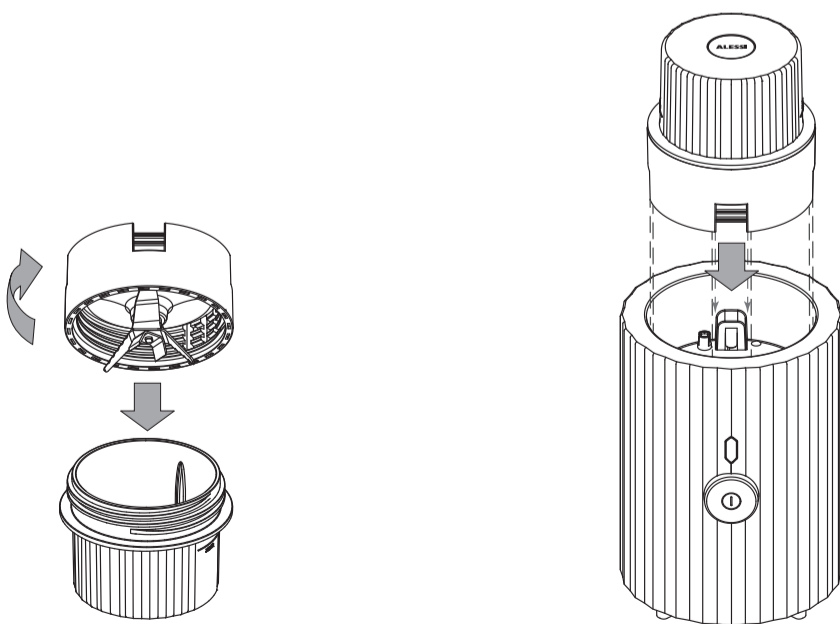


fig. 10

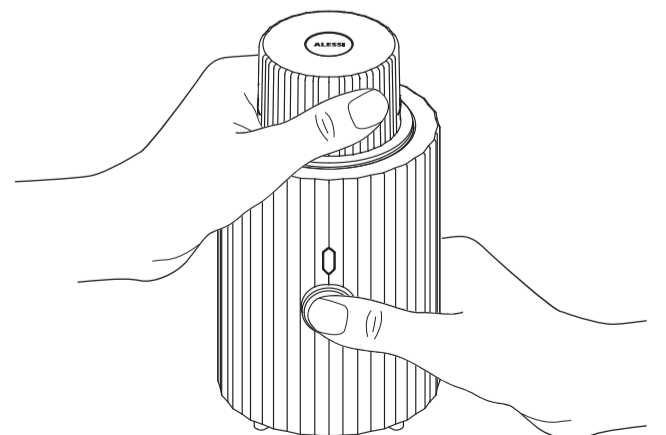


fig. 11

IMPORTANT SAFEGUARDS

The use of electrical appliances always requires compliance with general safety precautions in order to reduce the risk of electric shock and/or injury to persons.

A list of such precautions follows:

1. **READ THE INSTRUCTIONS CAREFULLY BEFORE USING THE PRODUCT.**
Store the instructions and refer to them for as long as the product is used.
2. After unpacking the appliance, do not discard the packaging in the environment and keep plastic bags out of the reach of children or people with disabilities.
3. **DO NOT** use the product in any way other than for its intended purpose. Alessi declines any responsibility for damage caused by improper use. (e.g. not having carefully read the instruction manual, tampering with any part of the appliance, non-compliance with Important Safety Information or the use of non-original spare parts).
4. Do not use a power supply other than the one indicated on the product label.
5. Do not use adaptors and/or extension cables.
6. Do not pull on the cable when removing the plug from the socket.
7. Switch off the appliance and unplug it from the socket when not in use, before assembling or disassembling parts and before cleaning. To unplug, hold the plug firmly and remove from the socket.
8. Do not allow the cable to hang down from the work surface.
9. Keep the appliance away from the edge of the work surface, to avoid any risk of it overturning. Rest the appliance on a flat, dry surface.
10. **KEEP THE APPLIANCE OUT OF REACH OF CHILDREN.**
11. Do not place the appliance on or near working electric or gas hobs or in an oven or near any sources of heat. Avoid any contact between the cable and hot surfaces, such as hobs.
12. **CAUTION: THE BLADES ARE SHARP. SPECIAL CARE MUST BE TAKEN WHEN HANDLING THEM DURING CLEANING OPERATIONS.**
13. If the blades jam, unplug the appliance from the mains before using a spatula to move any ingredients that are obstructing the blades.
14. Always wait until the blades have stopped, switch off and remove the plug from the socket before removing the container from the base.
15. Before using the appliance, check that the blade unit is securely screwed onto the container. The safety system fitted on the blender does not allow the blender itself to operate, even if it is plugged in, if the motor body and the graduated container screwed onto the blade unit are not perfectly assembled. If the container is lifted during operation or if this happens accidentally, the blender automatically stops and the motor shuts down.

16. To avoid electric shocks, do not rinse or immerse the motor unit, the power cable or the plug in water or other liquids.
17. Do not touch the appliance with wet hands.
18. Do not use the appliance outside.
19. Never leave the appliance unattended while it is in operation and always disconnect the plug from the socket after each use, before any cleaning or maintenance or in the event of a malfunction.
20. Do not use the appliance continuously for several cycles and for an extended period of time.
21. Never fill beyond the maximum level marked on the graduated container.
22. Do not use the appliance with an empty container (i.e. without liquid or solid ingredients).
23. Only use Alessi guaranteed spare parts and accessories.
The use of accessories including containers not recommended by the manufacturer can cause personal injury.
24. In the event of a malfunction or damage to the appliance or the cable, do not use the product and contact your trusted Alessi retailer. If necessary, you can contact the manufacturer Alessi S.p.A. at the: help@alessi.com
25. To avoid any danger, the power cable, if damaged, must be replaced by the manufacturer, a technical service centre or qualified personnel.
26. Never attempt to open the motor body of the appliance.
27. This device may be used by children aged 8 years and older and by persons with reduced physical, sensory or mental capabilities or lack of experience and knowledge if they have been supervised or instructed in the use of the appliance in such a way that they understand the dangers.
Children must not play with the appliance. Cleaning and maintenance of the appliance must not be carried out by children under 8 years of age and without adult supervision. Keep the appliance and the power cord out of the reach of children aged under 8 years of age. Do not allow children to use the blender without adult supervision.
28. This appliance is not intended for use by persons (including children) with reduced physical, sensory or mental capabilities or lack of experience and knowledge, unless they have been given supervision or instructions regarding use of the appliance by persons responsible for their safety. Special supervision is necessary when the appliance is used near or directly by children.unless supervised by an adult.
Children must be supervised to ensure they do not play with the appliance.
29. When pouring hot ingredients into the tall container, be careful not to scald yourself. The food to be blended must not be too hot (max. temperature 60° C. - 140° F). Allow hot ingredients to cool before blending.
Pay careful attention when pouring hot liquids to ensure there are no unexpected clouds of steam.
30. Do not use the graduated containers in the oven, microwave or any heat source.

**SUPERVISE CHILDREN TO BE SURE
THAT THEY DO NOT PLAY
WITH THE APPLIANCE**

**THE PRODUCT IS FOR INDOOR
HOUSEHOLD USE ONLY**

SAVE THESE INSTRUCTIONS

WWW.ALESSI.COM

MDL17 “Plissé” Personal blender with portable container

Designed by Michele De Lucchi in 2023, this personal blender is made of thermoplastic resin and has been tested and certified to guarantee consumer safety.

DESCRIPTION OF THE PERSONAL BLENDER

- A - Motor body.
- B - Blade unit in AISI 304 steel.
- C - Tall graduated container made of transparent thermoplastic resin (PCTG) - maximum capacity 550 ml.
- D - Short graduated container in transparent thermoplastic resin (PCTG) - maximum capacity 120 ml.
- E - Spout lid with silicone seal.
- F - START/STOP button.
- G - Power indicator light. (fig. 1)

The PCTG material from which the two graduated containers are made is BPA free.



ATTENTION!

**KEEP THE APPLIANCE OUT OF
THE REACH OF CHILDREN.**

**THIS PRODUCT IS INTENDED
FOR HOUSEHOLD USE ONLY.**

- This appliance is intended for domestic and similar uses such as:
 - in shops, even by non-specialised users;
 - in small businesses;
 - on farms;
 - by customers in hotels, motels and other residential environments;
 - in Bed and Breakfast type environments.
- However, if the appliance is

intended to be used professionally to prepare food for sale in shops, the appliance is not considered to be for household and similar use.

FIRST USE

After having taken the blender out of its packaging, check that it is in perfect condition.

- Wash the container and the spout lid with hot water and washing up liquid.
Rinse and dry them carefully.
Take the blade unit out of the protective short container.
Unscrew the container and blade unit by turning anticlockwise.
Wash the blade unit using a sponge, warm water and washing up liquid (fig. 2).

Be careful when handling or washing the blade unit as you could cut yourself.

Do not touch the blades with your fingers.

- Wash the short container with warm water and washing up liquid.
- Rinse and dry both carefully and thoroughly.
- Wipe the motor body **ONLY** with a damp cloth to remove any dust residue. (fig. 3)

DO NOT immerse or rinse the motor body, power cable or plug in water or other liquids. (fig. 3)

USE

The appliance can be used to blend, mix or chop mainly fruit and vegetables to prepare juices, smoothies and milkshakes. It can also be used to chop ice cubes. To avoid damage to the blades, do not blend foods that are too hard.



ATTENTION!

Do not operate the blender for more than 1 minute at a time. If you have to use it again, switch it off and let it cool down for about a minute before switching it on again.

Avoid putting hot liquids into the blender.

If you want to use hot food, let it cool for a while before pouring it into the graduated container (max. permitted temperature 60° C. - 140° F).

TAKE CARE NOT TO SCALD YOURSELF.

- Place the personal blender on a flat, firm surface, well away from any flammable materials.



ATTENTION!

DO NOT LET THE CABLE HANG OFF THE WORKTOP - THIS COULD CAUSE THE BLENDER TO FALL. (FIG. 4)

- Place the food in the tall container. Be careful not to exceed the maximum level indicated. Check that there are no utensils in the container.
- Screw the blade unit onto the container, turning clockwise, turn the container upside down and insert it into the housing on the motor body.
- Position the container by matching the 4 grooves on the base of the blade attachment to the 4 protrusions on the inside of the

motor body. Push down to make sure the parts fit together perfectly (fig. 4).

SAFETY!

THE SAFETY LOCK ON THE BLENDER DOES NOT ALLOW IT TO OPERATE, EVEN IF IT IS CONNECTED TO THE MAINS, IF THE MOTOR BODY AND THE GRADUATED CONTAINER SCREWED ONTO THE BLADE UNIT ARE NOT PERFECTLY ASSEMBLED. IF THE CONTAINER IS LIFTED FROM THE MOTOR BODY DURING OPERATION OR IF THIS HAPPENS ACCIDENTALLY, THE BLENDER STOPS AUTOMATICALLY AS THE SAFETY LOCK CAUSES THE MOTOR TO SWITCH OFF. IN THE EVENT OF A MALFUNCTION, THE POWER INDICATOR LIGHT REMAINS OFF.

- Insert the plug into the power socket.
- The power indicator light located above the START/STOP button is red and indicates that all parts are correctly assembled.
- Press and hold the START/STOP button (fig. 5)
- The blender starts chopping and the power indicator light is white. The longer you hold the button down, the more the food is chopped.
After a few seconds of operation, release the button and stop the blender to check the consistency of the food to avoid over-processing it. Each time you release the START/STOP button the power indicator light turns red.
The non-slip feet under the motor

body make it easier to hold the blender on the work surface but we still recommend holding the blender firmly in your hands. (fig. 5).

- When you have finished using the blender, disconnect the plug from the socket.
- Wait until the blades have stopped and lift the container off the motor body and turn it upside down on the work surface. (fig. 6)
Wait a for few seconds to allow the food to settle at the bottom of the container.
- After unscrewing the blade unit, you can pour your smoothie into a large glass. (fig. 7)
- Place the blade unit on a plate and then wash it.

The tall container can be transformed into a practical bottle by using the spout lid (E) Simply screw this onto the tall container. (fig. 8)

The lid has a silicone seal that makes the container airtight, suitable for safely transporting the food you have just prepared.

The food you have blended retains its freshness for several hours and you can eat it during your lunch break or for a snack.

The special shape of the spout lid allows you to drink directly from the container without having to unscrew it.

To open the spout lid, slide the button down with your finger, then press on the top of the button and the lid lifts off easily.

When you want to close the lid, to prevent accidental opening and to ensure an airtight seal, lower the lid and slide the button down with one finger. (fig. 9)

After use, wash the tall container and the spout lid. Unscrew the 2 parts by turning anticlockwise.

Before doing this, make sure that the lid is always closed to avoid damaging the parts. .

The Plissé personal blender also comes with a short container (D), which, in addition to protecting the blade unit, also serves as a mini blender for small amounts of food. (fig. 10)

Use this short container if you need to blend a small amount of food.

Be careful not to exceed the maximum level indicated.

The assembly of parts and operation is the same whether you use the tall or short container. The blade unit to be used is also the same for both containers.

- Attach the blade unit to the smaller container and fit it onto the motor body.
- Match the 4 grooves on the base of the blade attachment to the 4 protrusions on the inside of the motor body. Push down to make sure the parts fit together perfectly. (fig. 11)
- Insert the plug into the power socket, press and hold the START/STOP button (fig. 11)
The blender starts chopping.
Always remember, after a few seconds of use, to check the consistency of the food you are blending.
- When you have finished using the blender, disconnect the plug from the socket.
- Wait until the blades have stopped and lift the container off the motor body and turn it upside down on the work surface.
- After unscrewing the blade unit, you can place the food into a bowl. (fig. 7)
- Place the blade unit on a plate and then wash it.

Before storing the blender, we recommend screwing the short container onto the blade unit.

This ensures that the blades remain clean and are protected. (fig. 10)



ATTENTION!

WHEN FIRST USED, THE BLENDER MAY EMIT A NEW SMELL; THIS IS TO BE CONSIDERED NORMAL AND DISAPPEARS WITHIN A SHORT TIME WITH USE.

CLEANING

After use, wait until the blender blades have stopped and then remove the plug from the socket before carrying out any maintenance and cleaning.



ATTENTION!

DO NOT TOUCH THE BLADES WITH YOUR HANDS DURING WASHING.
IF FOOD RESIDUE STICKS TO THE BLADES, REMOVE IT USING A PLASTIC OR WOODEN SPATULA. DO NOT USE YOUR FINGERS.
THE BLADES ARE SHARP.
BE CAREFUL NOT TO CUT YOURSELF!

- **Blade unit:**
we recommend washing it by hand using a sponge, warm water and washing up liquid.
The blade unit is NOT dishwasher safe.
- **Tall container, short container and spout lid:**
we recommend washing them by hand with warm water and washing up liquid. Dry thoroughly.

They are **NOT** dishwasher safe.

Do not use sponges or abrasive detergents.

Rinse and dry all the components carefully.

- **Motor body:**
ONLY clean with a damp cloth, then carefully dry with a soft cloth (fig. 3).

SPARE PARTS

In the event of wear, loss or damage, you can purchase the following spare parts from your trusted Alessi dealer:

- B - Blade unit
- C - Tall container
- D - Short container
- E - Spout lid

WARRANTY

This product is covered by a two-year warranty from the moment of sale. The warranty covers all manufacturing defects; damage caused by accidental impact or improper use is therefore excluded. **Alessi declines any responsibility for damage caused by improper use.**

WARRANTY inside the packaging.

DISPOSAL

At the end of the product's life cycle, be sure to dispose of the device properly by contacting a specific waste disposal centre.

Disassemble all components to dispose of them in compliance with any applicable laws in your country. Never use force to attempt to open the motor unit.

WEEE inside the packaging.

FOOD SAFETY

This appliance is made with materials designed for contact with food products and is compliant with all applicable laws.

SOME TIPS FOR USING THE BLENDER

Preparing a fruit smoothie

Place the fruit in the blender cup, add juice or water.

Close the tall container with the blade unit and place it on the motor body.

Blend until the desired result is obtained.

Preparing a vegetable smoothie

Place the vegetables in the blender cup, add stock, water or milk.

Close the tall container with the blade unit and place it on the motor body.

Blend until the desired result is obtained.

Chopping ice

Place a maximum of 5 ice cubes in the tall container at a time..

Be careful not to insert large cubes.

The smaller the cubes, the faster and finer they will be chopped.

Close the tall container with the blade unit and place it on the motor body.

Blend until the desired result is obtained.